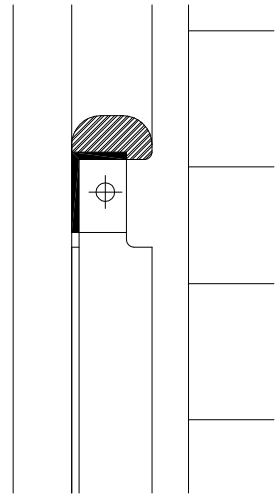
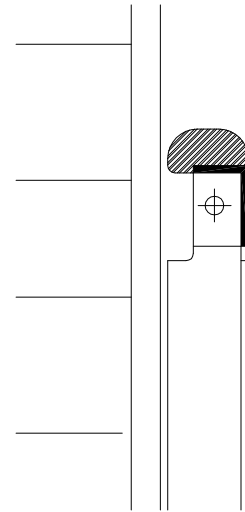


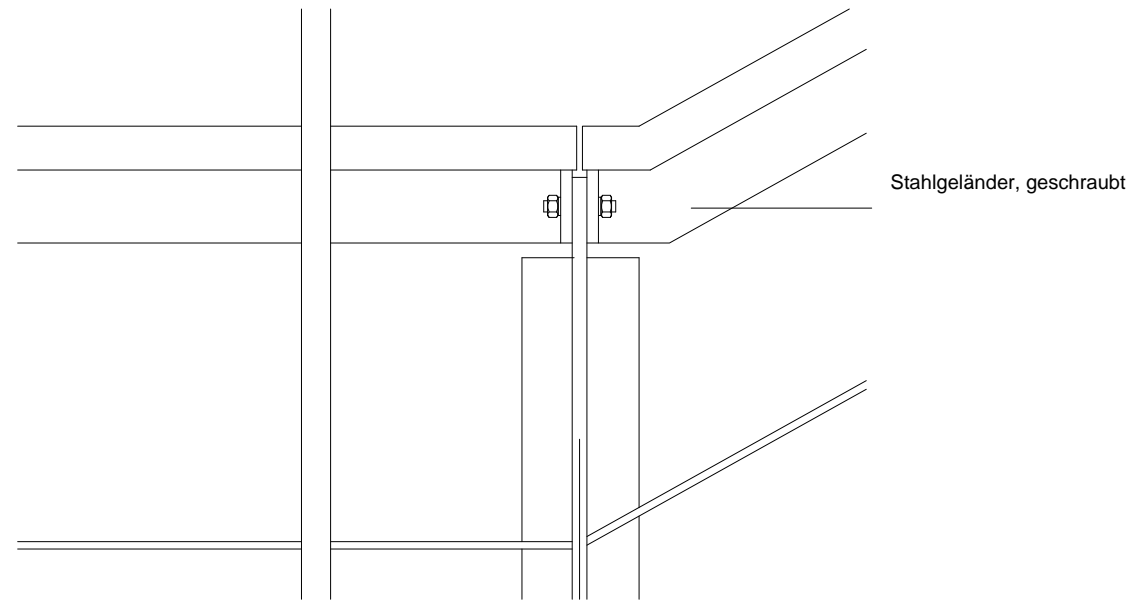
Pos. 4.3 - Geländer



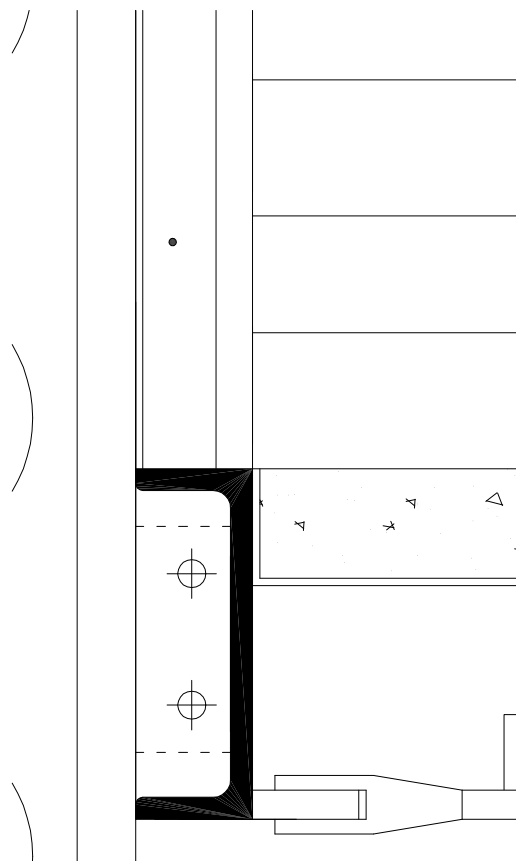
Pos. 4.3 - Geländer



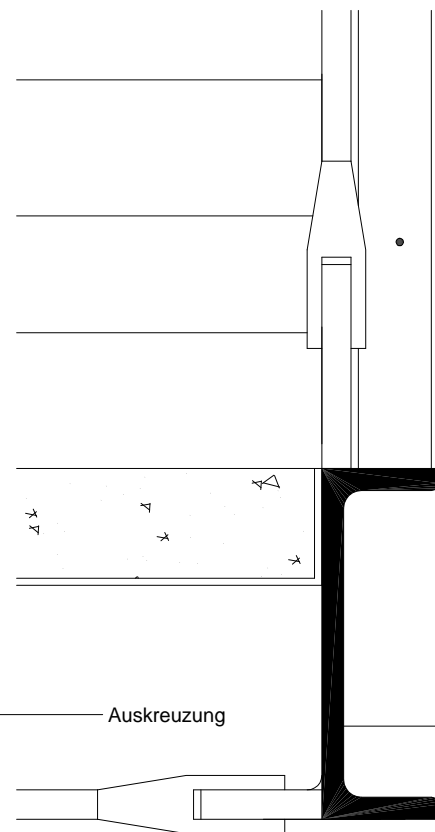
Pos. 4.3 - Geländer



Pos. 4.1 -  
Treppenaufhängung  
an HEM



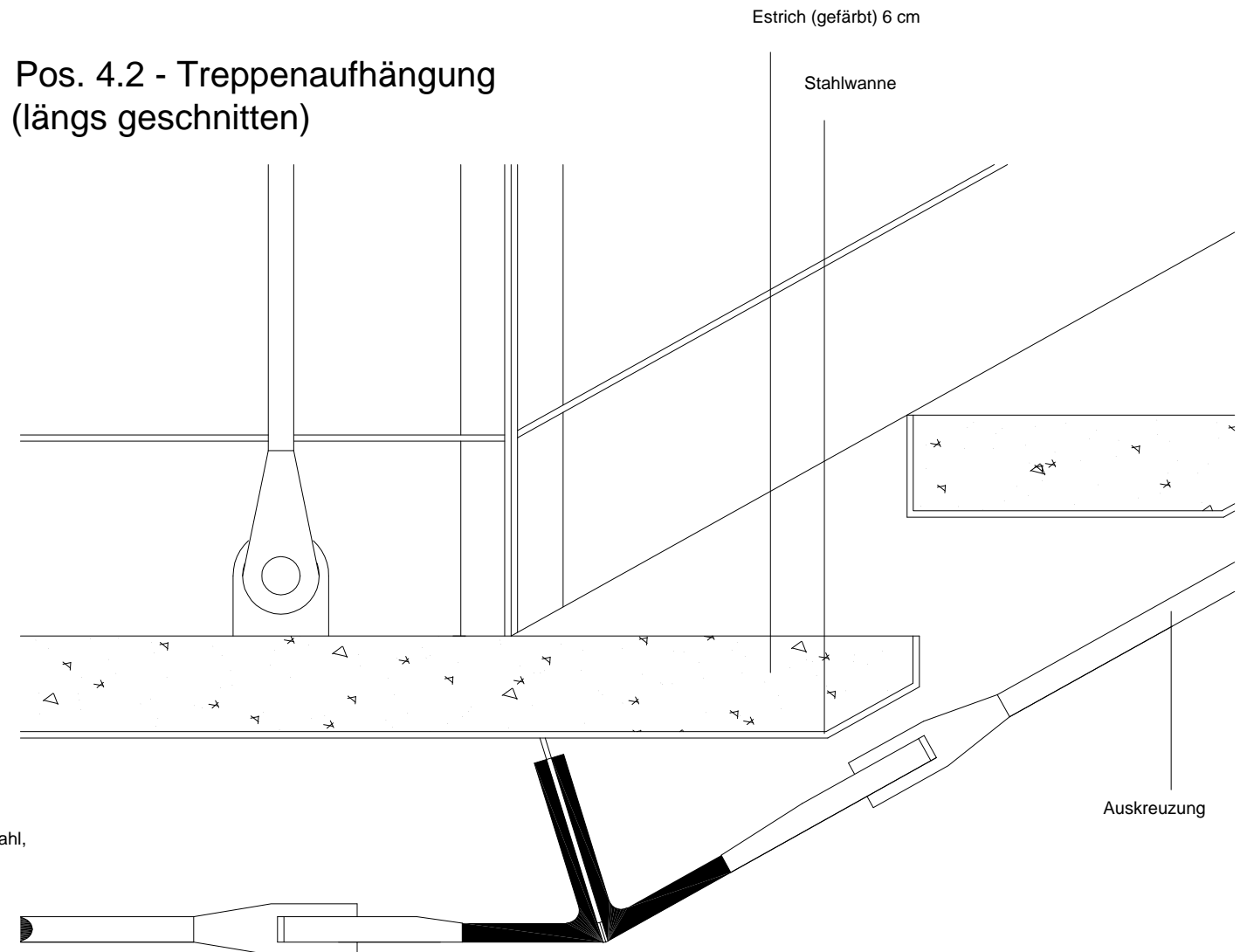
Pos. 4.2 -  
Treppenaufhängung (quer  
geschnitten)



Auskreuzung

U-Profile aus Stahl,  
geschweißt

Pos. 4.2 - Treppenaufhängung  
(längs geschnitten)



Estrich (gefärbt) 6 cm

Stahlwanne

Auskreuzung